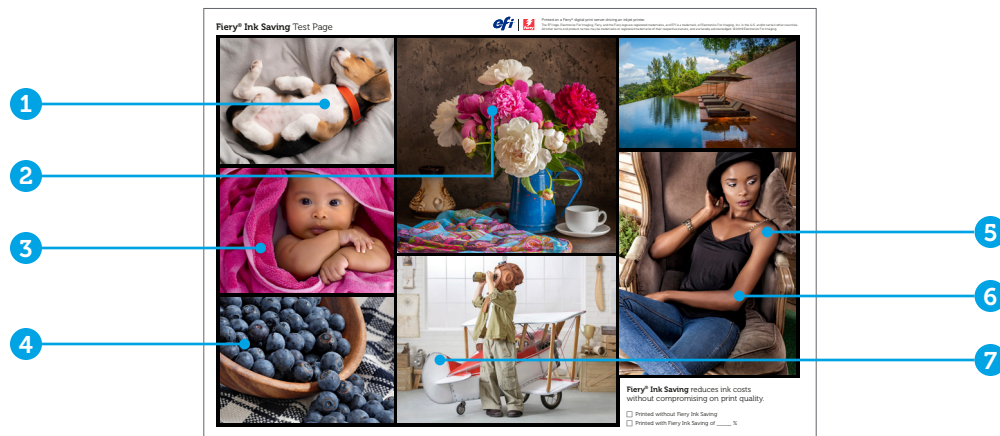


Great savings, great image quality.

EFI™ Fiery® ink saving technology allows you to optimize the ink usage on your wide or superwide prints while achieving the optimal image quality required for a job.



Successful ink savings

Create and use Fiery ink saving profiles that can result in up to a 40%* reduction in ink consumption. Available for printers driven by Fiery proServer and Fiery XF,** the easy-to-use low, medium, and high ink-saving presets allow you to produce print jobs that combine optimal ink usage and image quality with:

- 1 No reduction in highlight or shadow details
- 2 No loss of saturation or vividity
- 3 No hue shift of colors
- 4 No loss of contrast or dynamic range
- 5 No gradation artefacts
- 6 No unnatural-looking skin tones
- 7 No introduction of image graininess

Additional ink saving benefits

As well as saving on ink costs, Fiery ink saving can also offer additional benefits:

- Faster drying or curing times due to less ink usage
- More neutral grays from increased use of black inks
- More stable prints due to reduced overall ink usage
- Greener print solution that uses less ink and energy

* Ink savings vary depending on job characteristics and printing conditions (color management settings, printer type, ink set, and media used)

** See the [supported printers list](#) for Fiery ink saving compatibility information

Fiery ink saving technology

Fiery ink saving technology uses a unique combination of ink reduction technologies designed to maximize your savings with no visible image quality losses. We start with traditional methods of ink reduction, such as GCR and black generation controls, then add our proprietary Smart Ink Savings technology to deliver you the ultimate ink savings tool.

Fiery Ink Saving Option requirements:

The use of the Fiery Ink Saving Option requires:

- Fiery proServer or Fiery XF 7.2 or higher
- Fiery Command WorkStation® Package 6.5.0.433 or higher
- Fiery Color Profiler Suite 5.3.1 or higher***
- A compatible measurement instrument***

*** Required for ink saving profile creation

EFI fuels success.

We develop breakthrough technologies for the manufacturing of signage, packaging, textiles, ceramic tiles, and personalized documents, with a wide range of printers, inks, digital front ends, and a comprehensive business and production workflow suite that transforms and streamlines the entire production process, increasing your competitiveness and boosting productivity. Visit www.efi.com or call 650-357-3500 for more information.



Nothing herein should be construed as a warranty in addition to the express warranty statement provided with EFI products and services.

The APPS logo, AutoCal, Auto-Count, Balance, BESTColor, BioVu, BioWare, ColorPASS, Colorproof, ColorWise, Command WorkStation, CopyNet, Cretachrom, Cretaprint, the Cretaprint logo, Cretaprinter, Cretaroller, Digital StoreFront, DocBuilder, DocBuilder Pro, DockNet, DocStream, DSPdesign Studio, Dynamic Wedge, EDOX, EFI, the EFI logo, Electronics For Imaging, Entrac, EPCount, EPPPhoto, EPRegister, EPStatus, Estimate, ExpressPay, FabriVU, Fast-4, Fiery, the Fiery logo, Fiery Driven, the Fiery Driven logo, Fiery JobFlow, Fiery JobMaster, Fiery Link, Fiery Navigator, Fiery Prints, the Fiery Prints logo, Fiery Spark, FreeForm, Hagen, Inktensity, Inkware, LapNet, Logic, Metrix, MicroPress, MiniNet, Monarch, OneFlow, Pace, Pecas, Pecas Vision, PhotoXposure, PressVu, Printcafe, PrinterSite, PrintFlow, PrintMe, the PrintMe logo, PrintSmith, PrintSmith Site, PrintStream, Print to Win, Prograph, PSI, PSI Flexo, Radius, Remoteproof, RIPChips, RIP-While-Print, Screenproof, SendMe, Sincolor, Splash, Spot-On, TrackNet, UltraPress, UltraTex, UltraVu, UV Series 50, VisualCal, VUTEk, the VUTEk logo, and WebTools are trademarks of Electronics For Imaging, Inc. and/or its wholly owned subsidiaries in the U.S. and/or certain other countries.

All other terms and product names may be trademarks or registered trademarks of their respective owners, and are hereby acknowledged.