

EFI Pro 16h Printer Specifications

Description:	This document contains general specifications for the EFI Pro 16h Printers. Use these specifications during the initial phase of printer logistics planning and for installation site preparation prior to shipment of the printer(s).
Affected Printers:	EFI Pro 16h

Printer Specifications

This document contains general specifications for the EFI Pro 16h Printers. Use these specifications during the initial phase of printer logistics planning and for installation site preparation prior to shipment of the printer(s).

Prior to installation, read and understand the EFI Printer Safety Guide, available at: <https://inkjet.support.efi.com/doc.php?doc=683>

Revision History

03/06/17	Rev. A	Original release.	DR 3695
05/08/17	Rev. B	Corrected space requirement measurements per Engineering.	No DR
07/20/17	Rev. C	Updated footer/header.	No DR
11/20/17	Rev. D	Corrected height, depth, width measurements.	DR 4740

1.0 Printer Shipping Specifications

EFI Wide Format printers are shipped crated. The Printer is bolted to a pallet inside the crate. Once the crate has been removed, the printer and media tables must be unbolted and removed from the pallet.

A forklift capable of lifting the crated weight of the printer must be available at the installation site when the printer is delivered. Sufficient covered space must be available for printer uncrating operations. Printers are mounted with 4 wheels for position adjustment and four adjustable feet for leveling.

Note: Use the uncrated dimensions to determine if the printer will fit through the facility entrance. (See Figure 4)

Table 1: Dimensions – Imperial [Metric]

	Height	Depth (front to back)	Width (left to right)
Crated	82" [208cm]	43" [109cm]	225" [572cm]
Uncrated / Unassembled	64" [163cm]	36" [91cm]	137" [348cm]
*Uncrated / Assembled	*64" [163cm]	*52" [133cm]	*137" [348cm]
Assembled with Single Tables	64" [163cm]	88" [223cm]	137" [348cm]
Assembled with Double Tables	64" [163cm]	153" [389cm]	137" [348cm]

Uncrated, unassembled dimensions do not include the media handling systems.

*Dimensions provided in this row are with media handling system in place, doors closed and on wheels. (No Media Tables)

Note: Dimensions are rounded to the nearest inch [cm].

Table 2: Weights – Imperial [Metric]

	Gross Weight
Crated (Printer, Peripherals and Tables)	3555lbs [1615kg]
Uncrated / Unassembled (Printer ONLY)	1935lbs [878kg]
Fully Assembled (Media Systems and Single Tables)	2717lbs [1235kg]
Fully Assembled (Media Systems and Double Tables)	2962lbs [1343kg]

See *Engineering Space Requirements Drawings* on the last five pages of this document for complete uncrated dimensions with tables and doors open for absolute space requirements.

2.0 Overview

The illustrations below show overviews of the printer configurations available.

Caution! Never place objects on top of the printer. Objects placed on top of the printer may obstruct cooling fans and cause printer problems.

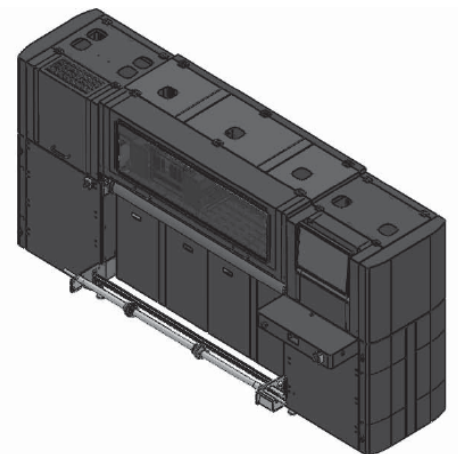


Figure 1: EFI PRO 16H Setup for Rolled Media Only

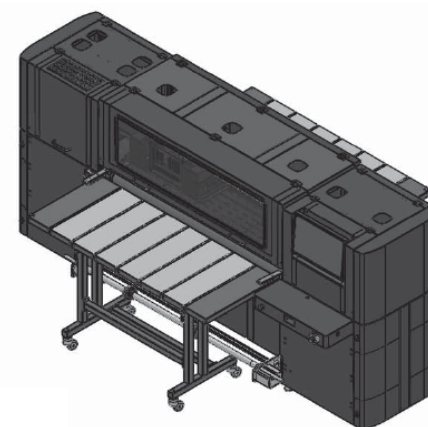


Figure 2: EFI PRO 16H With Single Media Table

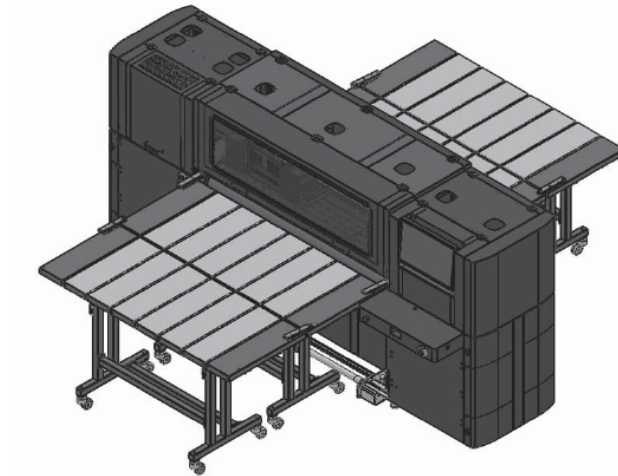


Figure 3: EFI Pro 16h with Double Media Tables

3.0 Minimum Access Door Dimensions

Once removed from the crate and pallet, and when unwrapped, the printer appears as shown below. The Printer does not have the rolled media handling system or operator station components installed and is on wheels so that it can be easily pushed if necessary. The illustration shows the dimensions of the printer unpacked so that the minimum door size for access to the facility can be determined. That door size can be as small as 3'-0" x 6'-0". Standard door size is approximately 3'-0" x 6'-8". However, the area inside the facility behind the door must be a minimum of approximately 16'-0" x 16'-0" to accommodate getting the printer inside the facility and turning it.

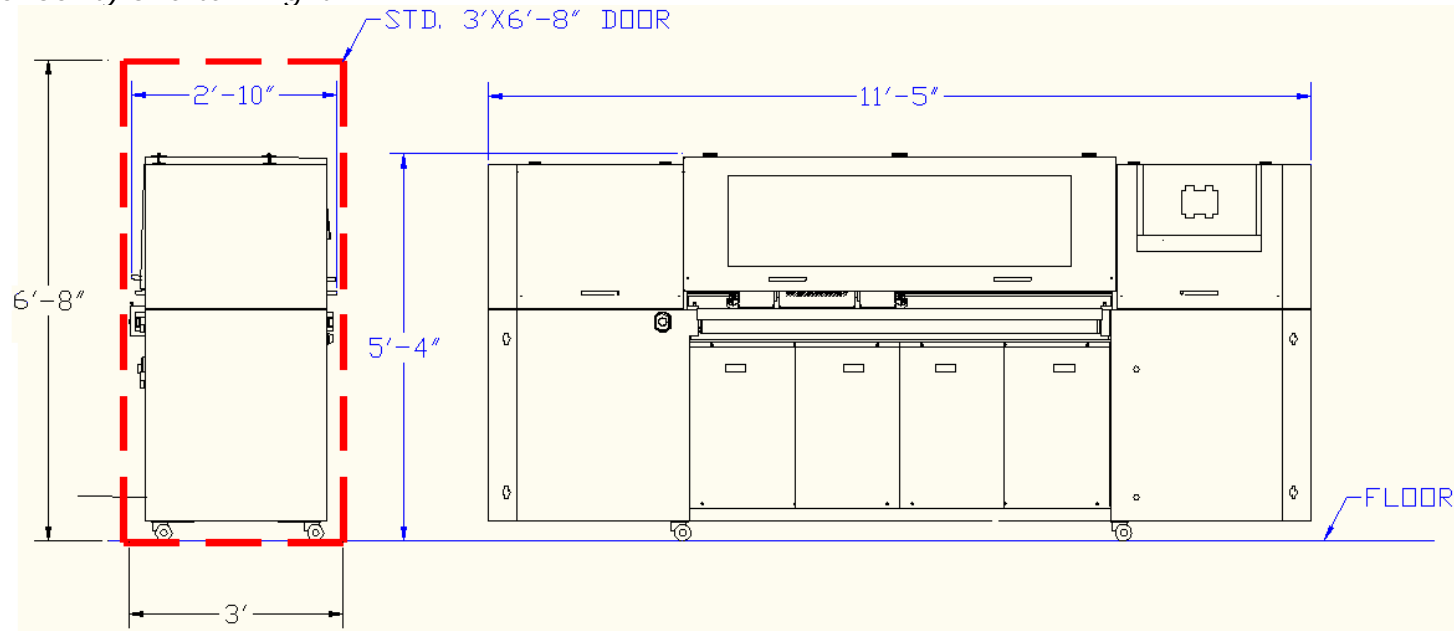


Figure 4: Minimum Door Dimensions

Note: In some cases it may be necessary to remove the front upper compartment door handles and E-stops or to remove the door frame for ease of access.

4.0 Installation Requirements

The following items are required for proper installation.

4.1 Print Room Environment

Keep the room where the printer is located free of dust and other particle contaminants. When installing an EFI printer in the same room with other kinds of printing equipment, the printer should be isolated by a partition.

EFI does not supply a ventilation system for the EFI Pro 16h printing system. However, EFI highly recommends the following:

- The area where the printer is installed should have adequate climate control for operations personnel, room size and printer requirements.
- The level of air conditioning required to maintain the proper operating environment for the space depends on many factors, typically the LED printers generate about 15,000 BTUs/hr. of energy and the Arc (RS/SD) printers about 22,500 BTUs/hr.
- For proper operation, the air conditioning system must completely change the air in the print area 6 (six) to 10 (ten) times per hour.
- To maintain environmental requirements and acceptable air quality, the system should have adequate air intakes and exhausts.
Note: EFI strongly recommends that customers contact an HVAC specialist to ensure that the facility has the proper air system capabilities.

Table 3: Environment Specifications

Parameter	EFI Pro 16h
Ambient Room Temperature	65°F to 80°F [18°C to 26.7°C]
Humidity	40% to 80% (Non-condensing)

Please see ink Safety Data Sheets for additional information.

4.2 Electrical



No NEMA connector is needed for installation; you must use the supplied blue connector. The customer's licensed electrician must wire this cable to the blue plug and the facility's electrical power. Size and configuration are determined by local code requirements and a licensed electrician to ensure that the printer's dedicated power source meets the printer's requirements.

Table 4: Electrical Specifications

Parameter	EFI Pro 16h LED
VAC Power	208 to 240 VAC, Single Phase, 50-60 Hz, ≤30 Amp Draw
Wiring	3 Wire Single Phase 220 VAC ±10%,
Peak/Avg. Current	Peak Current 42A - Average Current 21A

Note: Must have "Slow-Trip" Breaker, (*Thermal Magnetic Circuit Breaker*)

The location of the main power panel (where Power is plugged into the printer) is shown in Figure 6. This location is on the Feed Side (Rear) of the printer on the left side, next to the Electronics Compartment and opposite the operator's station. The plug and connections are also identified.

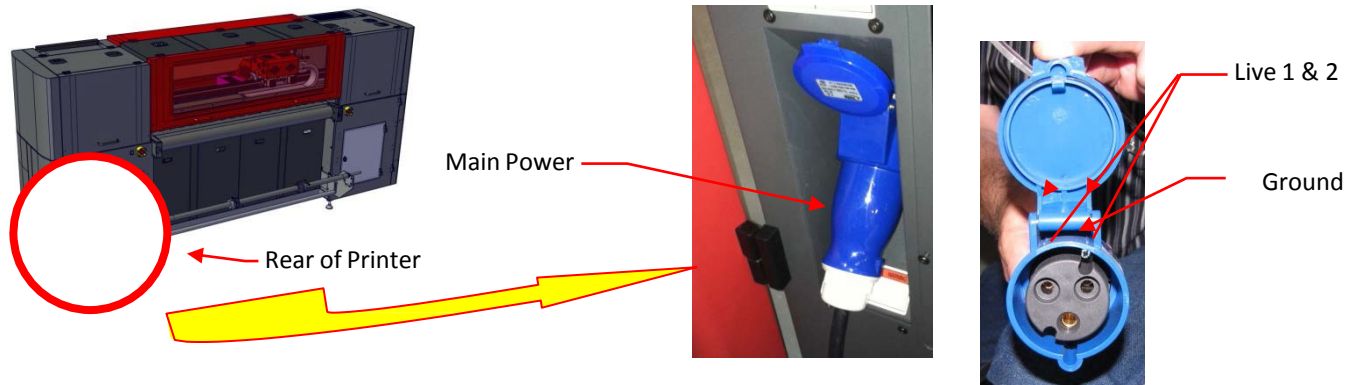


Figure 5: EFI Pro 16h Main Power Connector Location and Connector Configuration

5.0 Communication Requirements

A standard, high-speed, broadband internet connection is recommended for internet access.

6.0 Media and Ink

Sufficient space must be provided to store roll media up to 1.6 Meters long. In addition, space must be provided to store flat media in up to 5'-5" x 8' to 10' sheets.

Check with media supplier for floor load and environmental requirements. Sufficient space must be provided to store printer inks. Check Ink for environmental requirements. Dispose of all inks and solvents in accordance with local codes

Table 5: Media

Media Specifications	
Max. Roll Media Parameter	Value : Imperial [Metric]
Roll Diameter	9" [22.9cm]
Roll Weight	100 lbs [45.4kg]
Max. Sheet Media Parameter	Value : Imperial [Metric]
Sheet Width	65" [165cm]
Sheet Thickness	2" [5.08cm]
Sheet Weight	100 lbs [45.4kg]

7.0 Minimum Working Area Dimensions

The engineering drawings provided on the last five pages of this document show the printer dimensions, feed and take-up table dimensions, location of power connections, and required clearances around the printer area. To ensure that you have the latest version of these drawings, contact your field service engineer before site planning.

8.0 ACTARGs and Alignment Files

ACTARG Files and Alignment Files are stored on the EFI Pro 16h computer.

9.0 Suggested Floor Space Requirements (With Media Tables)

When setting up for operations using the media tables, it is recommended that a minimum of 8 feet be provided on the ends of each table for loading and unloading 4'x8' flat media. In addition, a minimum of 18 inches should be provided at each side of the printer when doors are open to access the openings and provide the ability to move around the ends of the doors.

Suggested total work area footprint using media tables are shown on the engineering drawings located on the last 5 pages of this document.

Note: The floor surface must be non-static tile or concrete.

10.0 Suggested Floor Space Requirements (Without Media Tables)

When setting up for operations for roll media using only the feed and take-up systems and no media tables, it is recommended that a minimum of 3'-9" be provided on the ends of the printer to allow for opening doors.

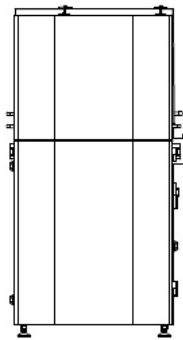
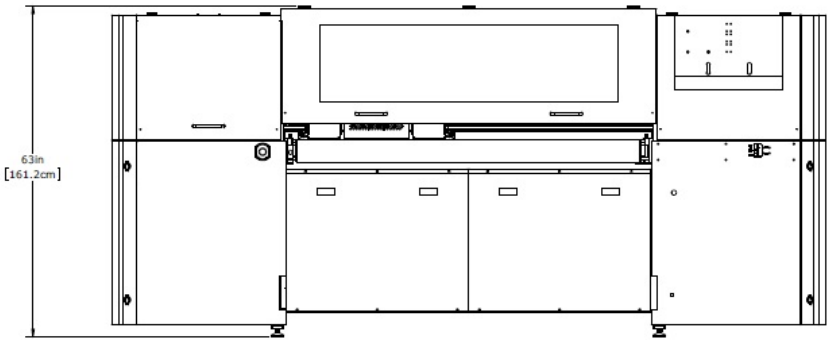
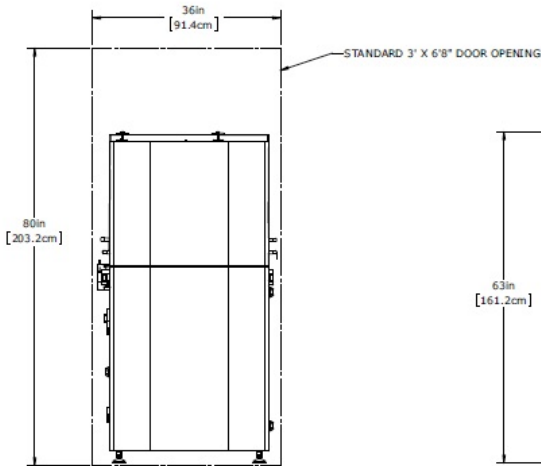
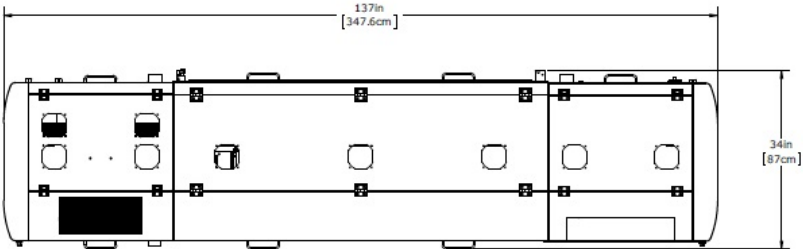
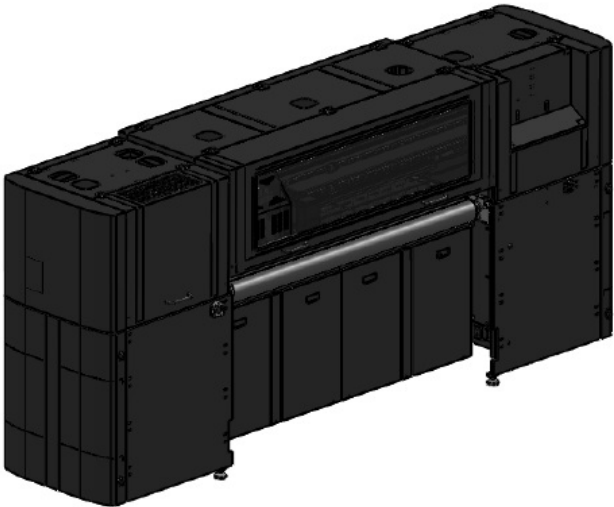
The Front (Feed Side) and Rear (Take-up Side) of the printer should have a minimum unobstructed area of 5 feet for loading and unloading roll media. See the engineering drawings located on the last five pages of this document.

11.0 Suggested Ceiling Height Requirements (With Printer Doors Open)

Minimum height clearances for the EFI Pro 16h Printer are provided on engineering drawings located on the last 5 pages of this document. Acceptable height clearances must be maintained to avoid overheating the printer. Minimum of 96" recommended.

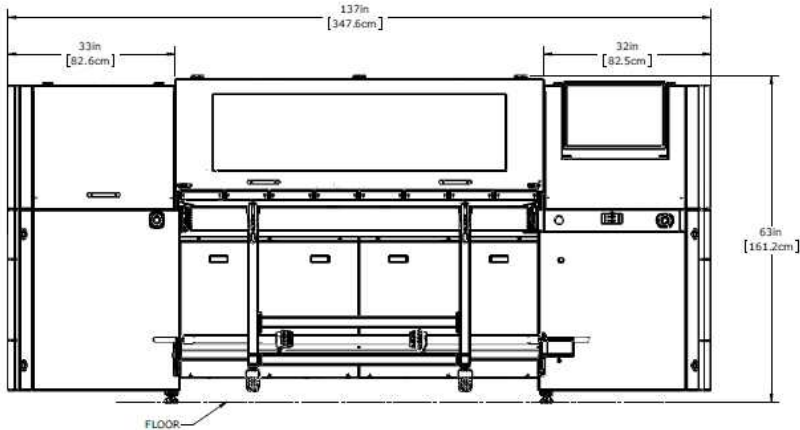
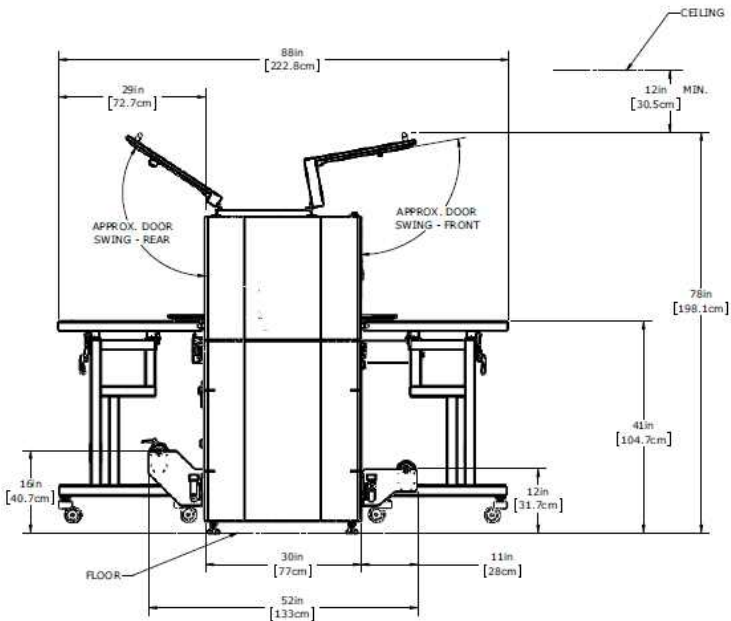
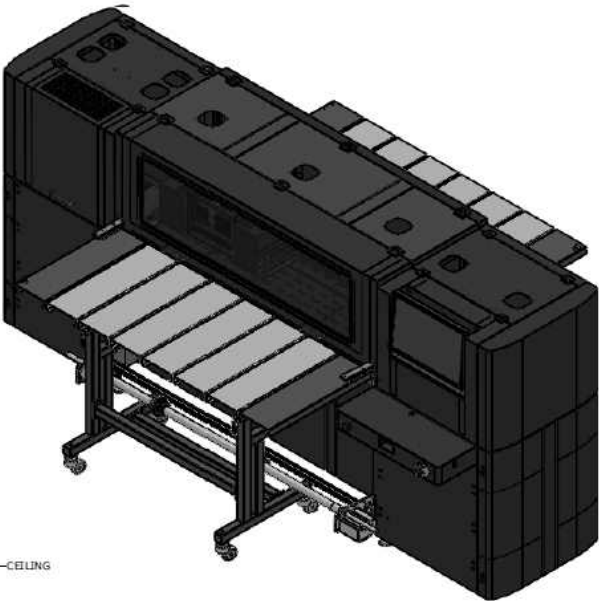
12.0 Engineering Space Requirements Drawings

See the next five pages of this document.

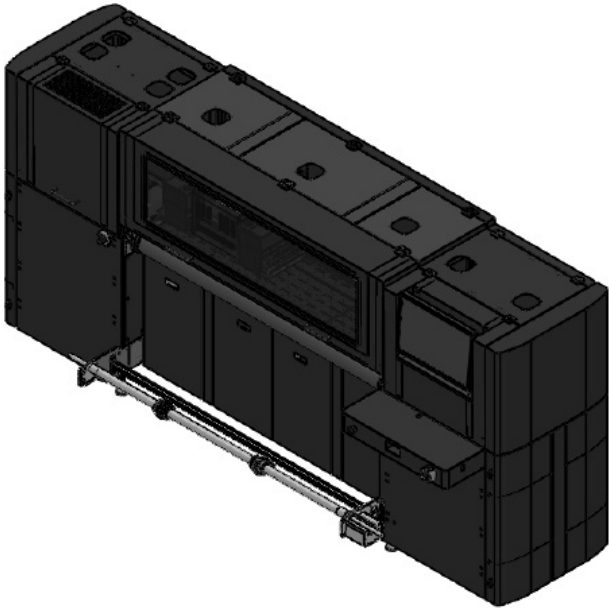
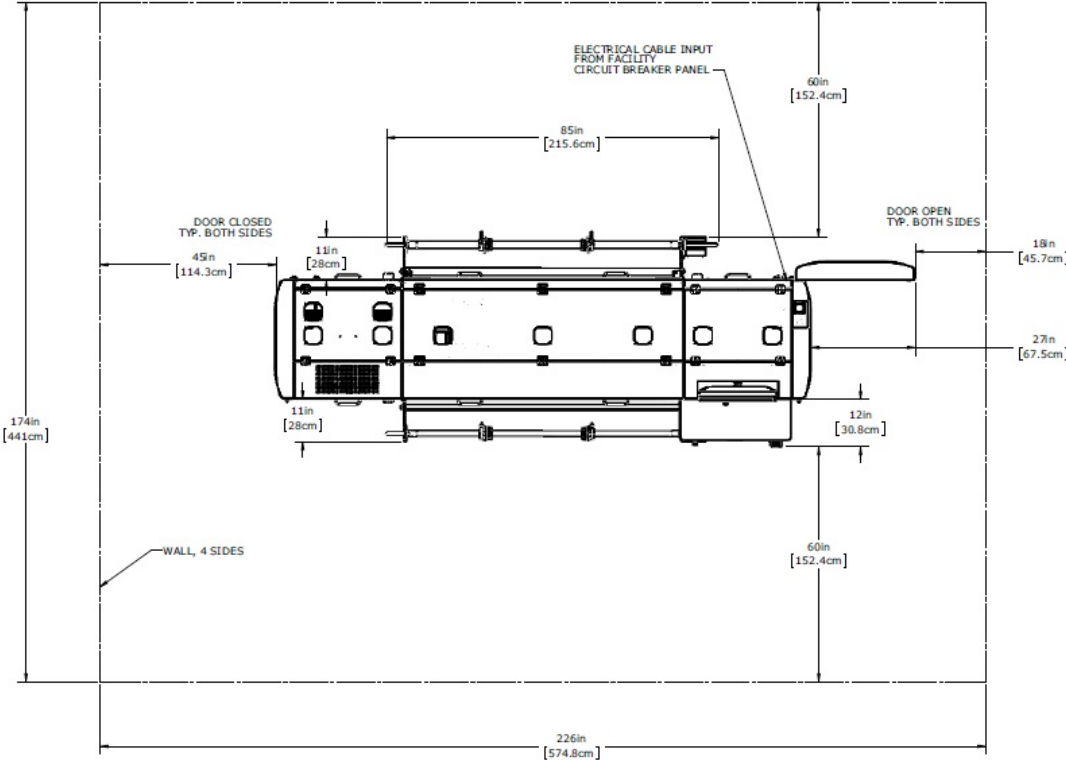


THE PRINTER AS UNCRATED, FITS THROUGH A STANDARD 3' X 6'8" DOOR

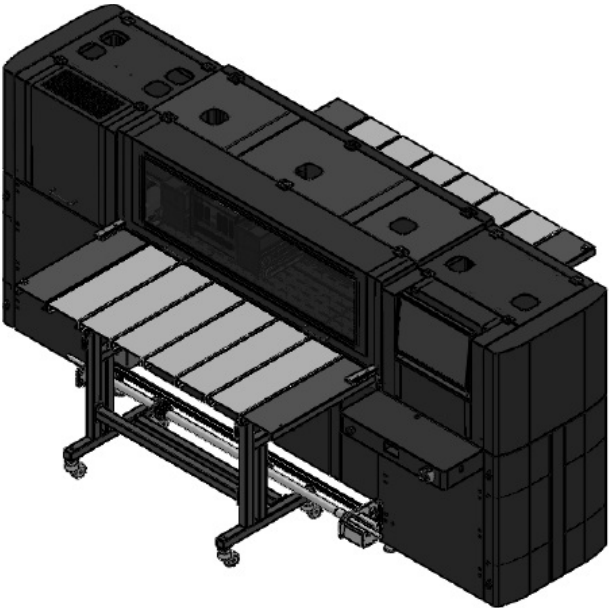
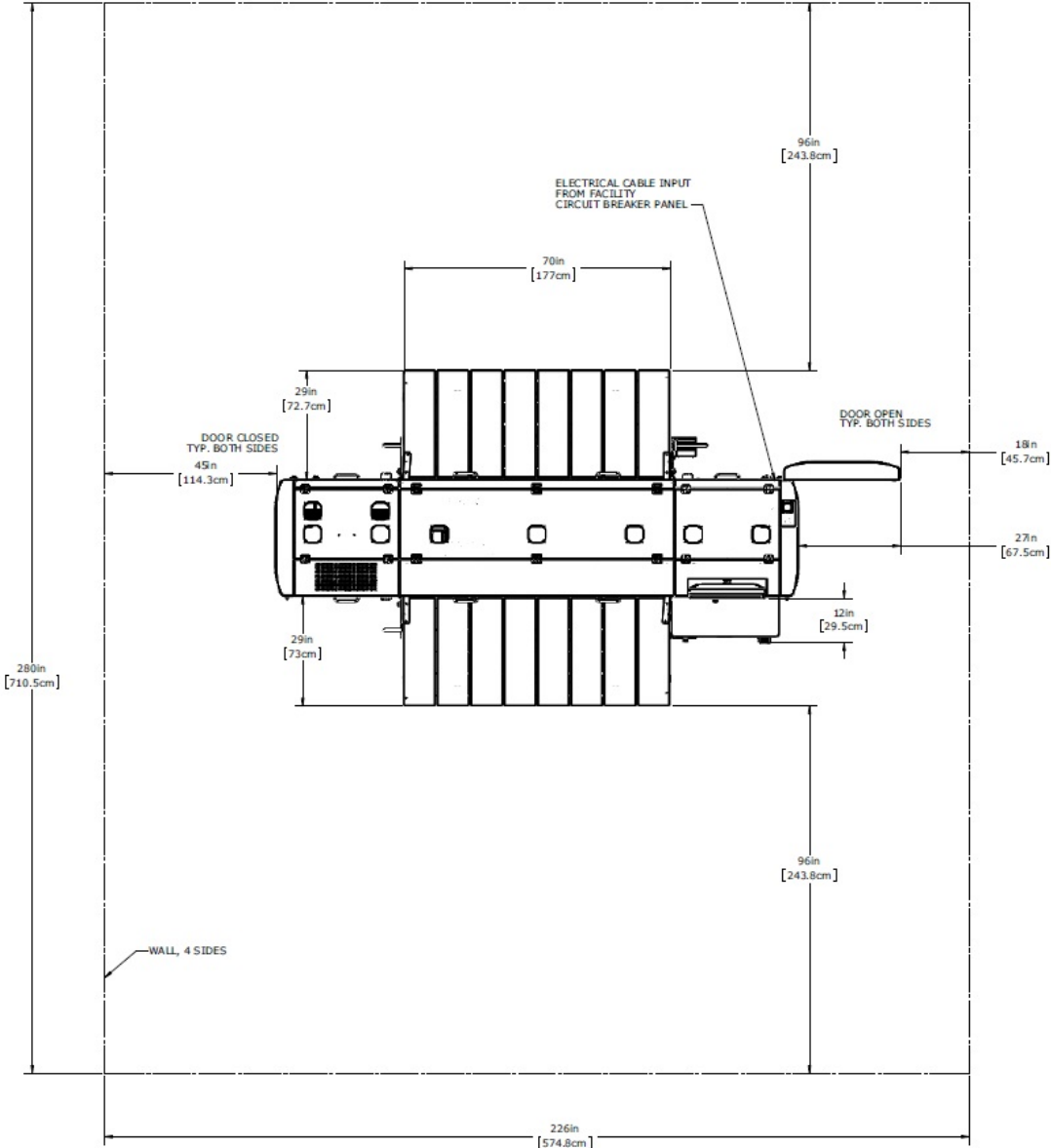
UNCRATED WITH NO PERIPHERALS INSTALLED



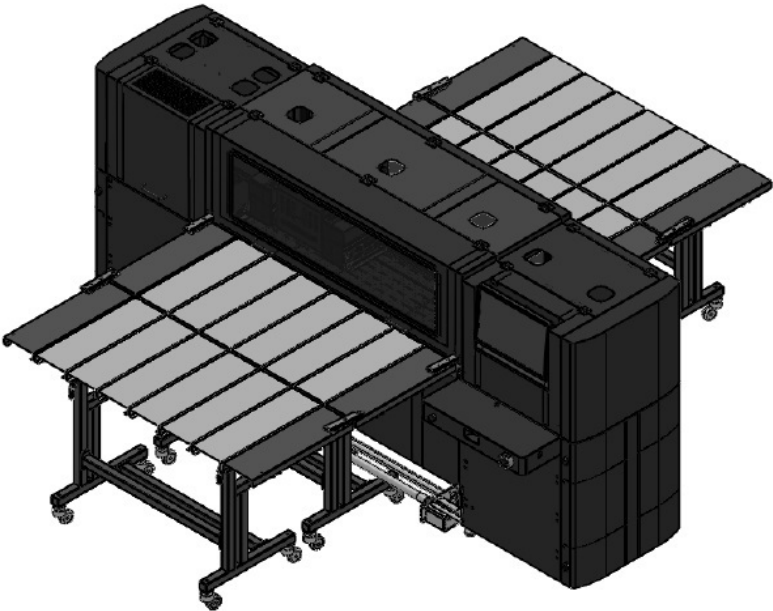
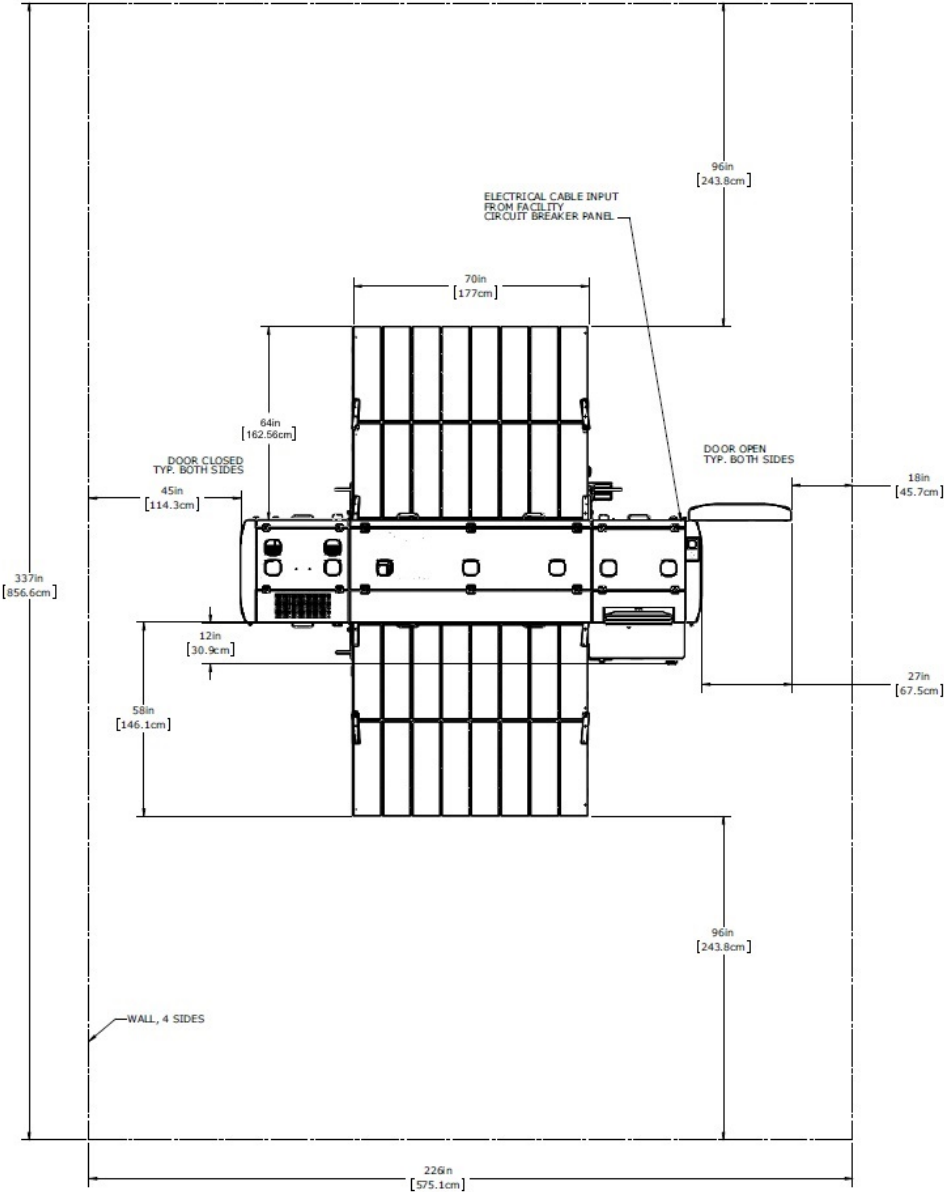
PRINTER WITH SINGLE MEDIAL TABLES INSTALLED.
(SHOWS HEIGHT REQUIREMENTS WITH UPPER DOORS OPEN)



- PRINTER WITH OPERATOR STATION AND ROLLED MEDIA HANDLING SYSTEM



PRINTER WITH SINGLE MEDIA TABLES



PRINTER WITH DOUBLE MEDIA TABLES